



FUSE

融合——手机与人

2022第六届“James Fabric”杯 休闲装创意设计大赛(范例)





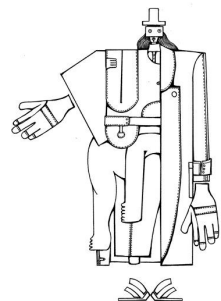
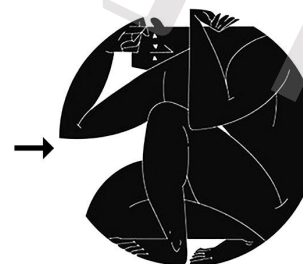
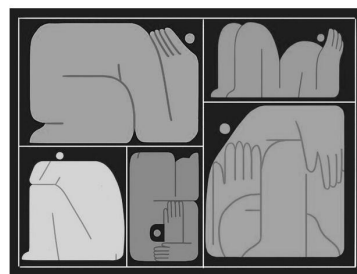
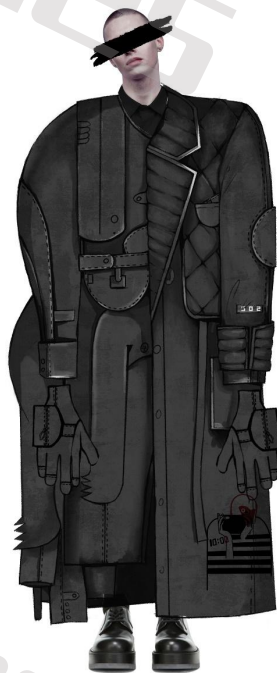
2022第六届“James Fabric”杯休闲装创意设计大赛
The 6th "James Fabric" Cup Casual Wear Design Competition



设计说明：系列设计灵感来源与东北的雪景中倒挂的冰锥。尖刺形状给予我服装图形图案的灵感。FUSE即融合的意思，希望通过该系列设计的服装让人们能拥抱东北的“冰雪世界”，感受自然美景与自然融为一体。

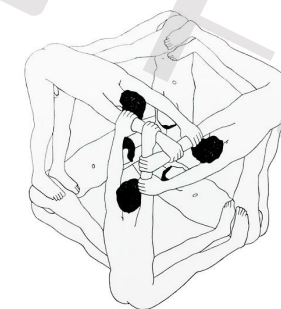
DESIGN DESCRIPTION: the series design inspiration comes from the ice pick hanging upside down in the northeast snow scene. The shape of the spikes inspired the graphic design of my dress. By FUSE, I mean fusion. I hope that through this collection, people can embrace the "Ice and snow world" in the Northeast and experience the natural beauty and nature together.





从拥挤的地铁五号线中受到启发, 这些人物以几何形的方式被禁锢, 用PS软件将平面图形进行拼贴, 既有Walter Van Beirendonck的怪诞又有川久保玲设计风格的拼贴让我充满了意外和惊喜。如果尝试用作廓形, 期待会出现有趣的效果。

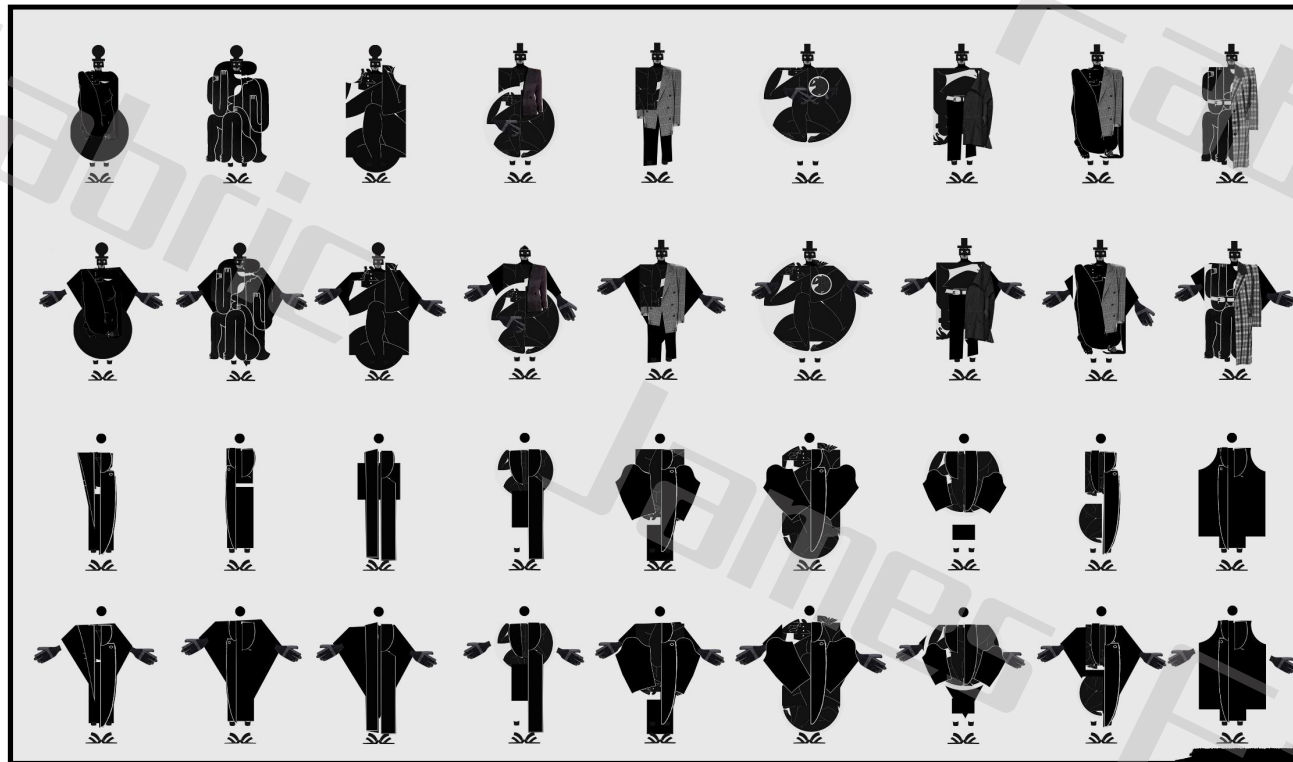
Inspired by the crowded subway line 5, these characters are imprisoned in geometric form. They use PS software to collage the plane graphics. I am full of surprise and surprise with the grotesque of Walter van beirendonck and the collage of Kawabata Kubo Ling's design style. If you try to use it as a profile, you can expect interesting results.



2022第六届“James Fabric”杯休闲装创意设计大赛
The 6th "James Fabric" Cup Casual Wear Design Competition



立体造型研究



廓形研究

在有了设计思路以后我通过禁锢在几何形体中的人物插画做了一系列的拼贴,并且以复古机能风的手套搭配将设计的趣味感受加强。在拼贴结束后设我将手套与西装结合做了一系列的立裁实验,手套造型和经典西装的碰撞让设计有了更加清晰的思路。

After I had the design idea, I made a series of collages through the character illustration which imprison in the geometry body, and strengthened the interest feeling of the design with the Retro Functional Glove. At the end of the collage I will do a series of gloves and suits to do a series of cutting experiments, glove shape and the collision of classic suits so that the design has a clearer idea.



FUSE

2022第六届“James Fabric”杯休闲装创意设计大赛
The 6th "James Fabric" Cup Casual Wear Design Competition



在利落主义与极简中性风趋势的影响下，羽绒服更推崇轻薄而兼顾实用性的设计特点。轻薄的羽绒服与大衣轮廓向结合，兼具时尚感和保暖性，为设计提供更多的创意可能，绗缝与分割手法则使羽绒造型更加立体

Under the influence of sleek and minimalist neutral trend, the design features of light and practical down jacket are preferred. The combination of light down jacket and coat contour has a sense of fashion and warmth, which provides more creative possibilities for design. Quilting and segmentation techniques make down modeling more three-dimensional



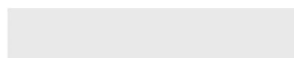
PANTONE 19-4013 TCX
藏青色
CSI PE 30-5-3



PANTONE 18-4214 TCX
暴风雨灰色
CSI 1100994



PANTONE 14-5002CX
银色
CSI CO 86-3-1



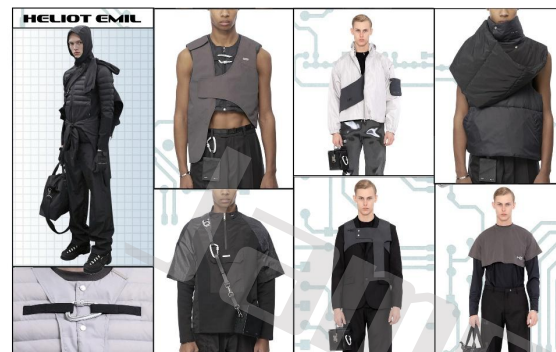
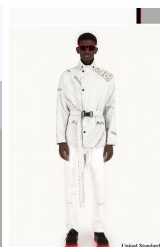
PANTONE 11-0602 TCX
雪白色
CSI CW 1200074

PANTONE 19-4013 TCX
藏青色
CSI PE 30-5-3

PANTONE 18-4214 TCX
暴风雨灰色
CSI 1100994

PANTONE 14-5002CX
银色
CSI CO 86-3-1

PANTONE 11-0602 TCX
雪白色
CSI CW 1200074



HELIOT EMIL 2020秋冬系列以品牌的代表性的全黑配色呈现.其中单凭包括复杂造型的针织衫,特殊剪裁的**皮革夹克**等等.此外,袋包部分也有着像是厚重的**皮革行李袋**.后**背包和方形肩包**等。



XANDER Zhou 系列单品中注入了众多类似**脉冲线**、**图片马赛克**等极具未来感的图形设计,并选择**混凝土色**、**蓝色**以及**翡翠色**等独特色调呈现。

商业色

本商业色调色盘上呈现一组深浅递进的中性色组。灰色偏冷的色调渲染出上世纪工业时代的静谧沉稳的默片氛围。雪白色、银色、暴风雨灰色都适用于跨季节性单品,极具商业性。

This Commercial Palette presents a set of neutral shades in progressive shades. The cool shades of gray render the quiet, sedate atmosphere of the industrial era of the last century. Snow White, silver, storm gray are suitable for cross-seasonal items, very commercial.



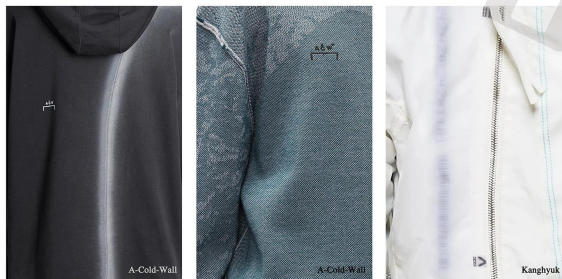
FUSE

2022第六届“James Fabric”杯休闲装创意设计大赛 The 6th "James Fabric" Cup Casual Wear Design Competition



工业磨损做旧

本系列着重体现复古氛围下的工装造型,做旧感、磨损是关键。通过染色、漂白、砂洗、喷绘、晕染效果等二次工艺营造陈旧感。



A-Cold-Wall

A-Cold-Wall

Kanghyuk



功能性金属装饰



功能性口袋



明线工艺

越来越多的设计师开始实用外露明线、水洗标的设计细节。



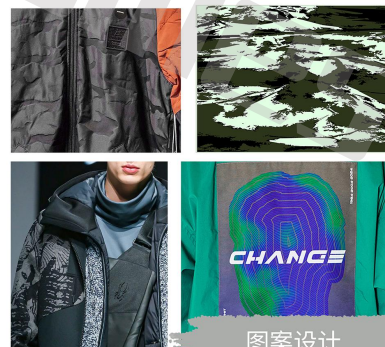
工业做旧褶皱面料

具有天然塑性感褶皱的面料在2020秀场备受青睐,如Emporio Armani 金属绸缎质感的褶皱表面, Polimoda、Studio Alch、Tokyo James等趣致的杜邦纸材质,以及Martine Rose、Junya Watanabe 高强度褶皱与Qasimi、Dunhuill的牙签折痕

着重实用功能性,而金属装饰则兼备实用和装饰于一身。随着户外运动元素的持续流行,户外元素也逐步被用于各类服装款式上,登山扣就是其中一个例子。



多功能性的工装口袋在演变出多样变化,成为风格设定的特定选择,从对称的双口袋到金属扣的搭配逐渐走向立体可拆卸的多样性。



图案设计

从探索户外的大自然风貌汲取灵感,以繁化简的手法保留想要的色彩和图案。



FUSE

第六届“James Fabric”杯休闲装创意设计大赛

The 6th "James Fabric" Cup Casual Wear Design Competition

— INTEGRATION OF PEOPLE AND MOBILE PHONES —



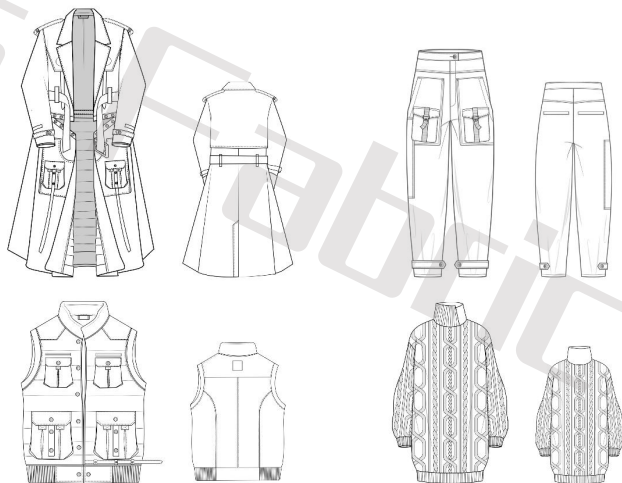


FUSE

2022第六届“James Fabric”杯休闲装创意设计大赛
The 6th "James Fabric" Cup Casual Wear Design Competition



LOOK1

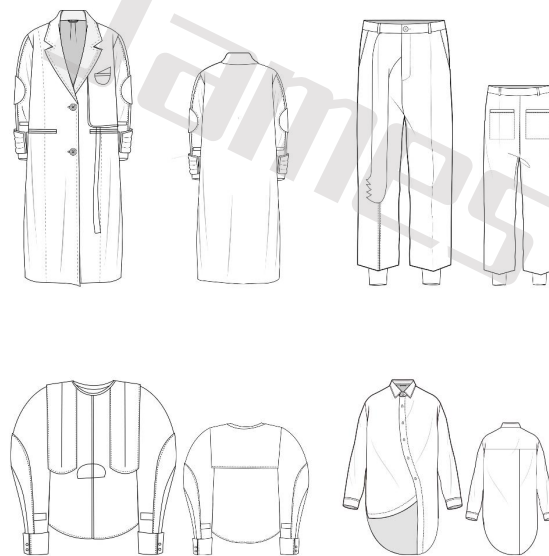


设计说明:LOOK1以可拆卸风衣羽绒服、高领毛衣、工装长裤作为搭配。运用暗扣对服装进行装饰和拼接,既可作为春秋时外搭的夹克和风衣,也可在秋冬季搭配羽绒马甲。颜色以黑色为主,灰色波普风格印花作为点缀,衣服运用了飘带及系带增加潮流感。

Design Description: Look1 is a combination of detachable windbreaker, down jacket, turtleneck sweater and tooling trousers. It can be used not only as a jacket and windbreaker in spring and autumn, but also as a down vest in autumn and winter. The color is mainly black, with grey pop style printing as embellishment. Streamers and lace ups are used to increase the tide.

设计说明:LOOK2以量感的造型为主,长款外套搭配内搭和长裤。设计中加入了解构元素,将解构人体融入服装造型,颜色以全身黑色来增强调性、统一服装结构。服装中内部夹层及肩布羽绒皆以暗扣安装,可拆卸为服装带来更多的趣味性和实穿性。

Design Description: with short down jacket, work vest, turtleneck sweater and work pants as collocation, look4 continues the interesting sense of the previous two series, and has fashionable decoration design at the vest. The upper body's gradual change color pants play the role of visually improving the waistline.



LOOK2





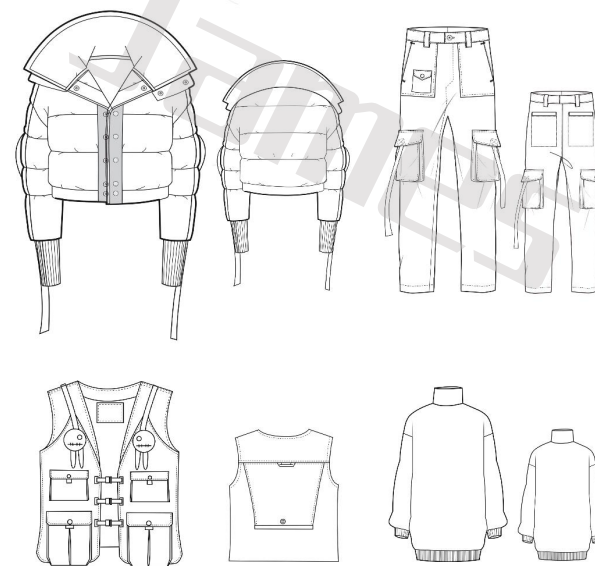
LOOK3

设计说明:LOOK3以羽绒服与大衣廓形相结合,兼具时尚感和保暖性,绗缝与分割手法则使羽绒造型更加立体。整套LOOK以羽绒大衣、趣味西服、工装裤、高领毛衣为搭配,颜色为黑色、灰色为主。飘带、暗扣、手拎包增强服装机能感。

Design Description: look3 combines down jacket and coat profile, which has both fashion and warmth retention. Quilting and segmentation make down modeling more three-dimensional. The whole set of look is matched with down coat, interesting suit, overalls and turtleneck sweater, and the color is mainly black and gray. Ribbon, buckle and hand bag enhance the sense of clothing skills.

设计说明:LOOK4的造型显得轻松而又有趣味性,采用短款的搭配方式。上衣渐变色彩与裤子搭配在视觉上提高腰线。飘带、工装口袋、肘部护肘设计强化机能感。面料以工业做旧手处理。

Design Description: the look of look4 is relaxed and interesting, and it adopts the collocation of short style. Top gradient color and trousers match to visually improve the waistline. Ribbon, tooling pocket and elbow protection design enhance the sense of function. The fabric is treated by industrial hand.



LOOK4